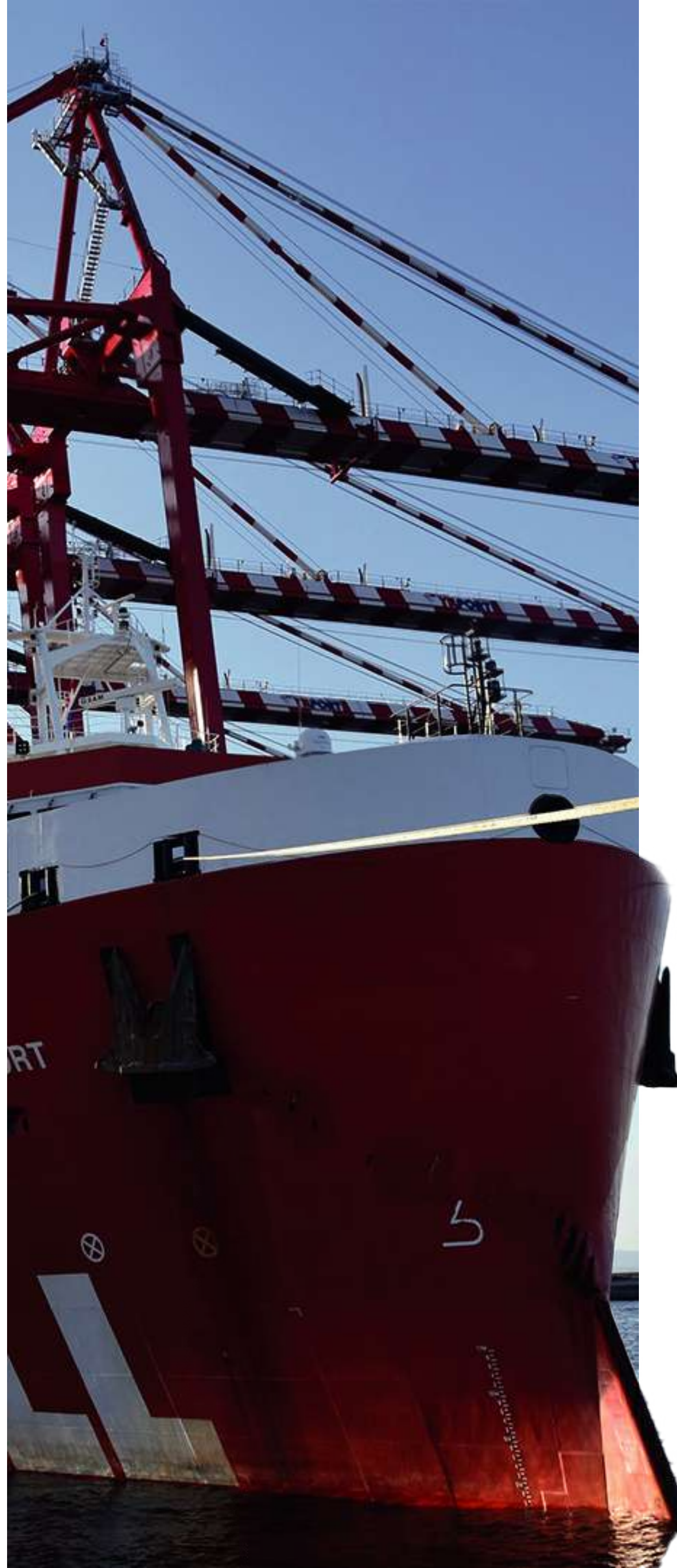




# BATI GROUP OF SHIPPING COMPANIES





We have logistics services  
in all borders and ports

We are a logistics company  
based on shipping,  
founded in 1992



Our Headquarters are located  
in Istanbul, Türkiye

We provide logistics solutions  
to our clients through our own offices  
in Türkiye, Germany, USA and Italy with  
250+ employees



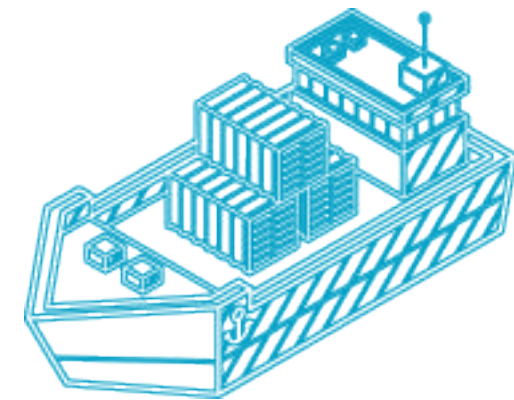
# Hinterland

4 COUNTRIES  
15 OFFICES  
250+ EMPLOYEES





# Services

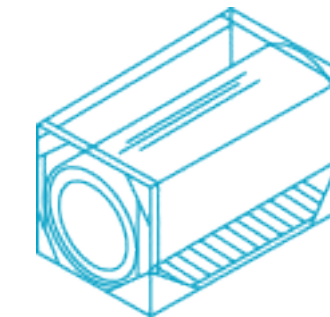


Sea Freight  
(FCL/ LCL)

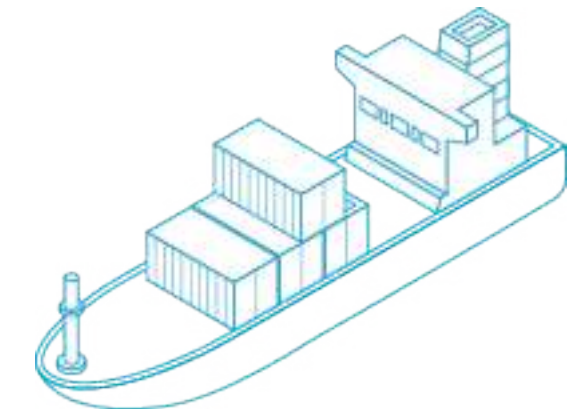


Air Freight and  
Courier Services

BATI **EXPRESS**



Bulk Liquid  
Logistics



Project Cargo  
Forwarding





# Sea Freight

FCL, Special Equipment and  
LCL Consolidation  
Services Worldwide





# Sea Freight

**65000+ TEU**

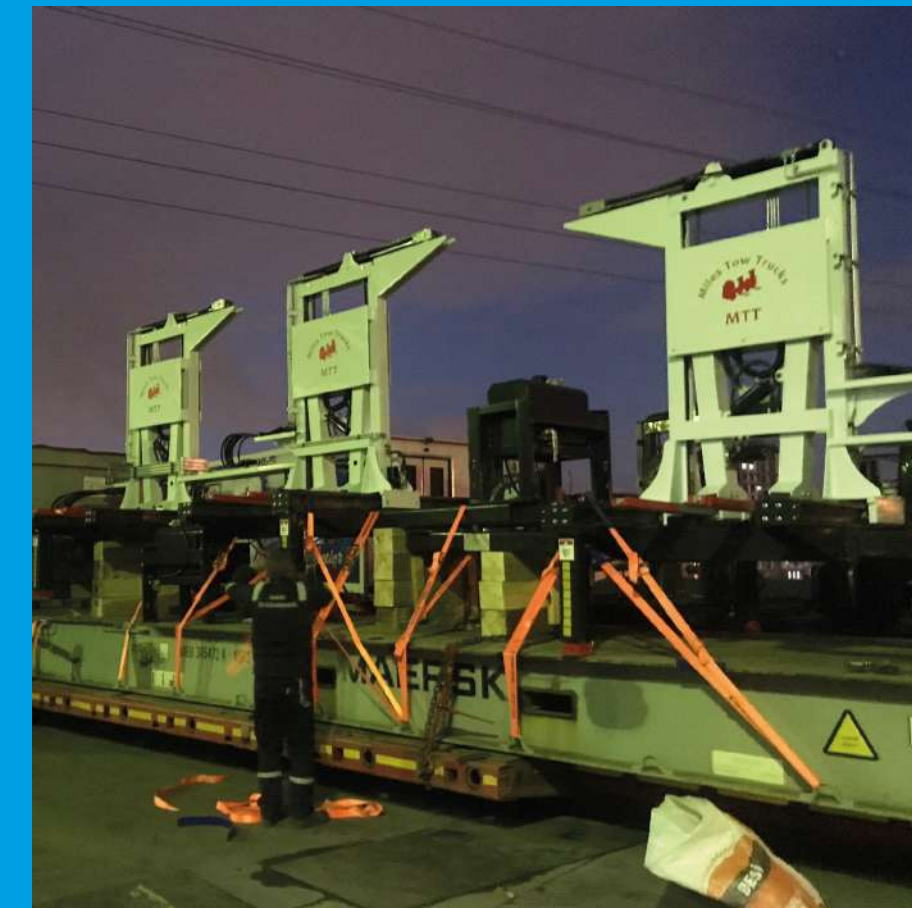
mobilized containers annually

**14600+**

customers served

**1200+**

cargo ships attended





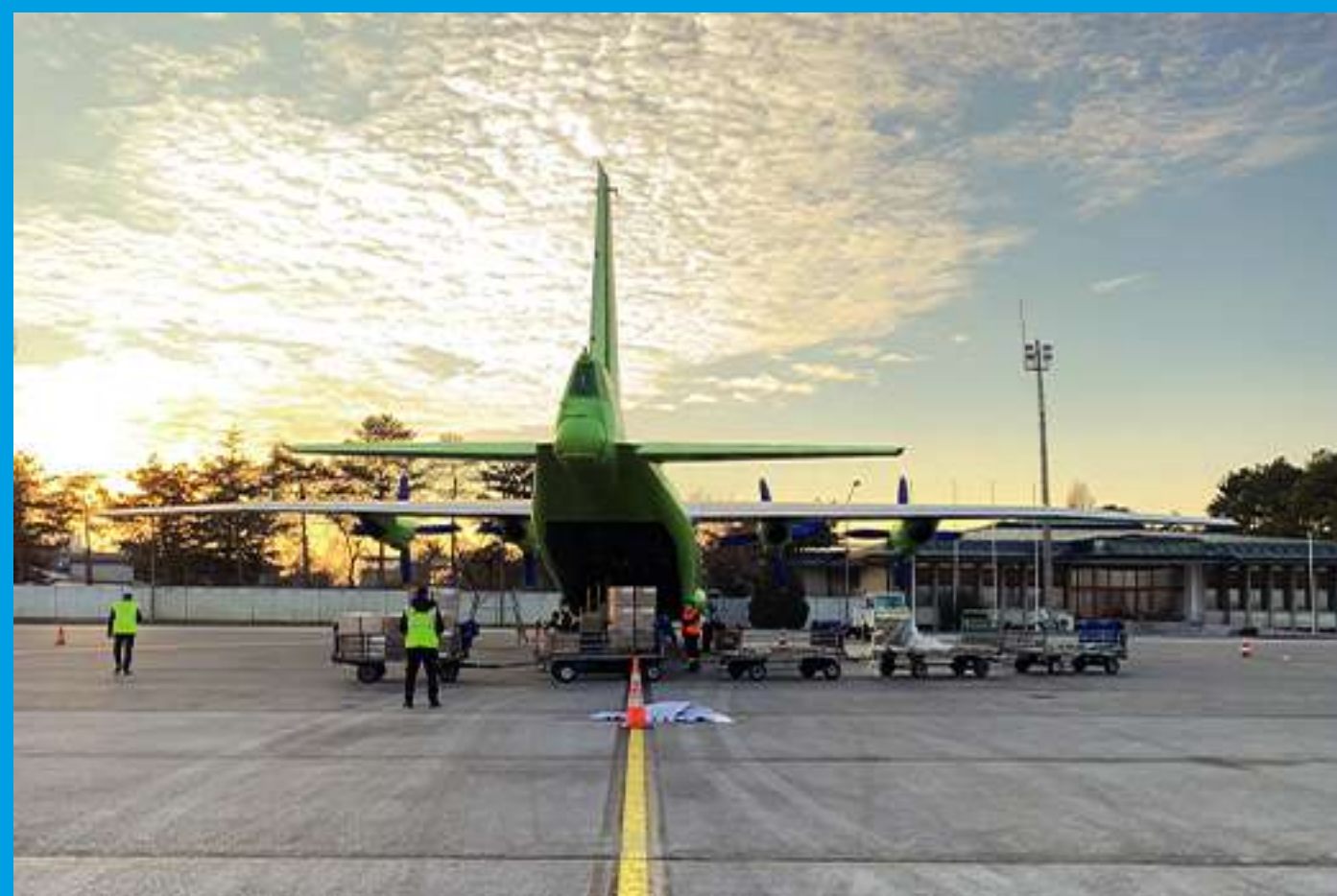
# Some Accomplished Sea Freight Shipments by BATI as Reference





# Air Freight

**BATIEXPRESS**  
A Company of Bati Group



AOG, Courier Service, Ecommerce,  
Pharmaceuticals, Live Animal Transportation,  
Perishable, DG, Charter Flight, Time Critical



**20 Million**  
KG's of Air Cargo  
is Transported



IATA Agents  
**since 1995**

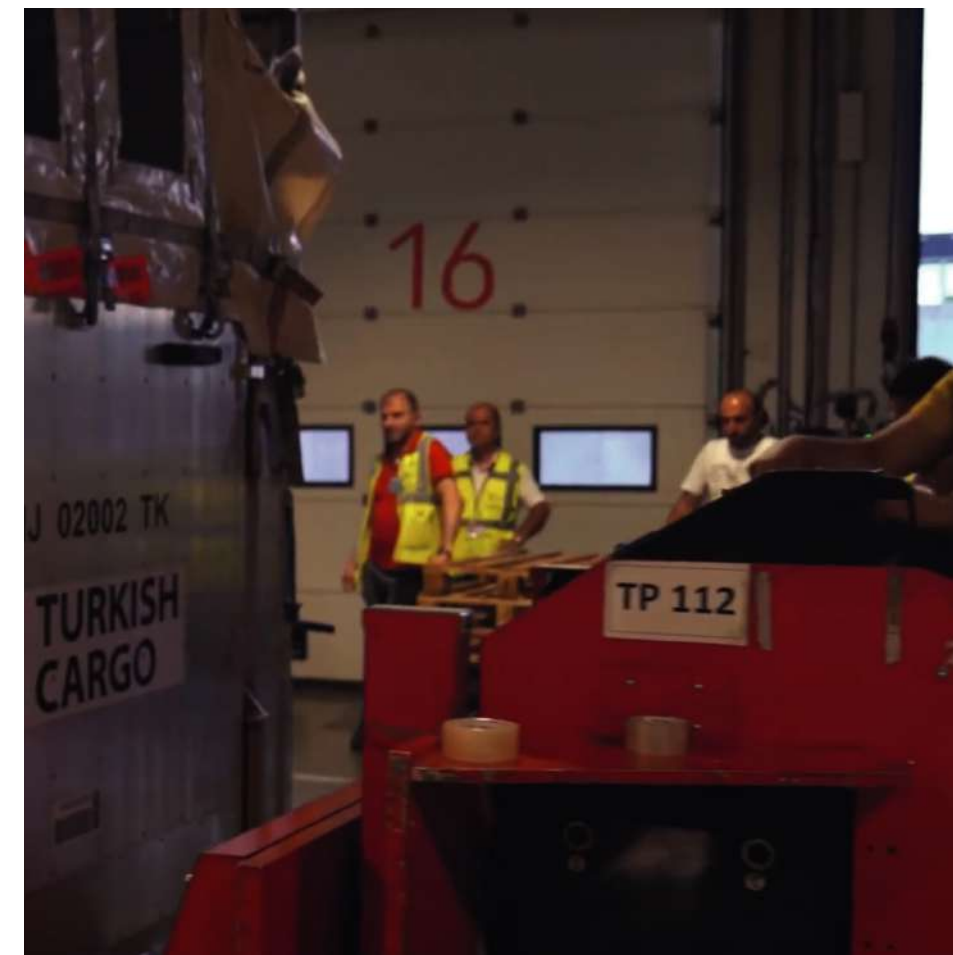
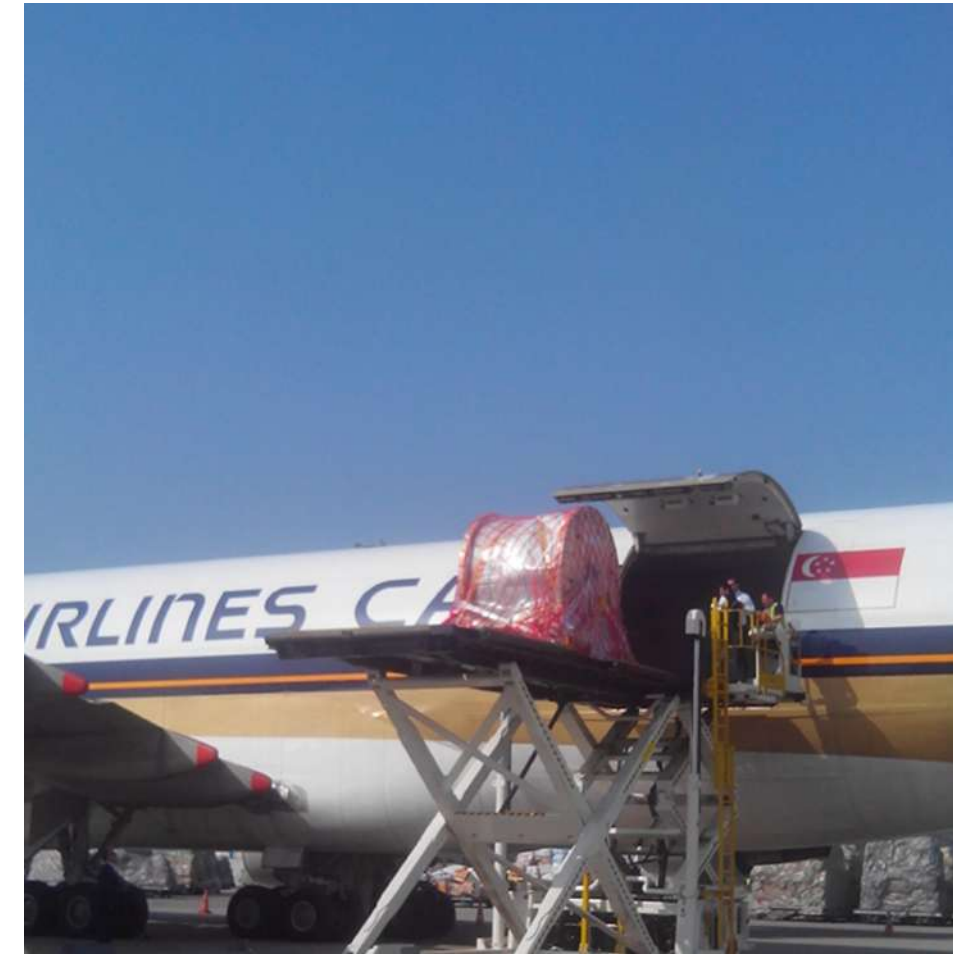


BATI INNOVATIVE LOGISTICS



# Air Freight and Courier Services

**BATIEXPRESS**  
A Company of Batı Group





# Some Accomplished Air Freight Shipments by BATI as Reference





## Flexitank Assembly Operation at BATI Warehouse



## Isotank Depot and Isotank Operations





- Static Cargoes
- Rolling Cargoes
- Energy Logistics
- Port Agency Services
- Yacht and Boat Transportation

# Project Cargo Forwarding





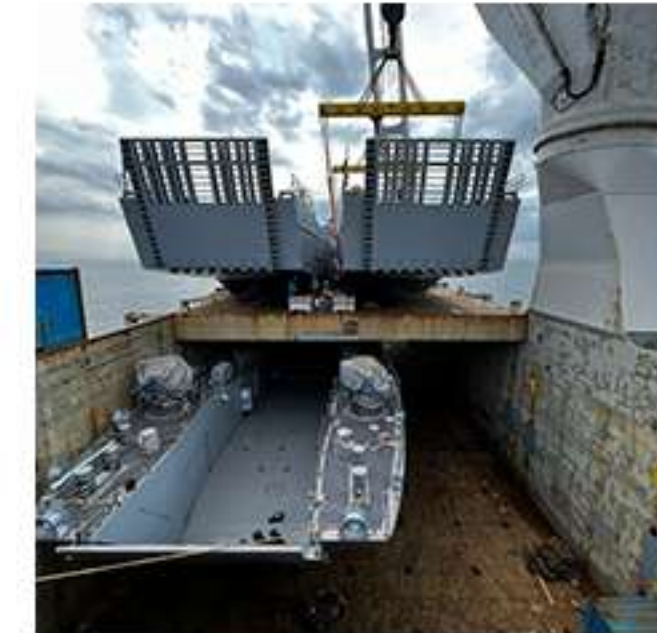
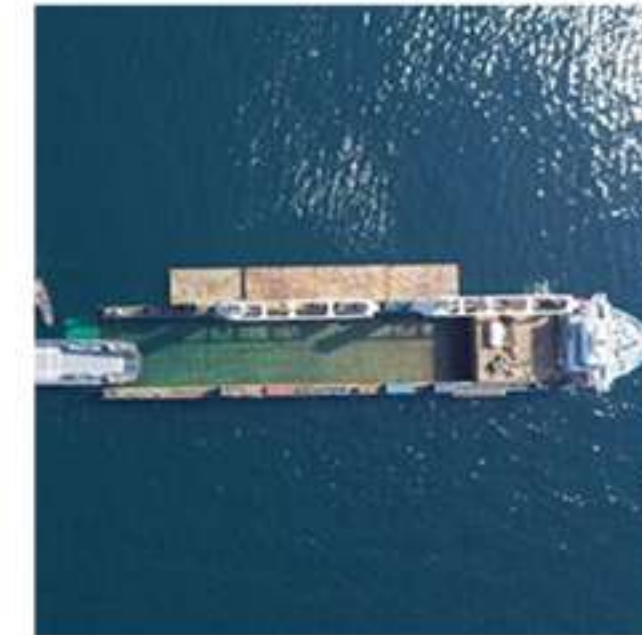
# Port Agency Services

**R ROLLDOCK**

BATI is acting as the exclusive commercial and husbandry agent of ROLLDOCK.

ROLLDOCK owns and operates an innovative fleet of highly adaptable project cargo ships. With ROLLDOCK's semi-submersible multifunctional vessels, we can handle a wide variety of situations and circumstances.

As part of Roll Group, ROLLDOCK benefits from in-house essential knowledge and engineering expertise. With over ten years of experience and specially designed vessels, ROLLDOCK ensures the safe transportation of heavy cargo across the world's oceans.





# Yacht and Boat Transportation

BATI is acting as the commercial and husbandry agent of **PETERS & MAY**.

**PETERS & MAY** provide world-leading global yacht transport, car transport, cargo shipping and marine logistics for brokers,

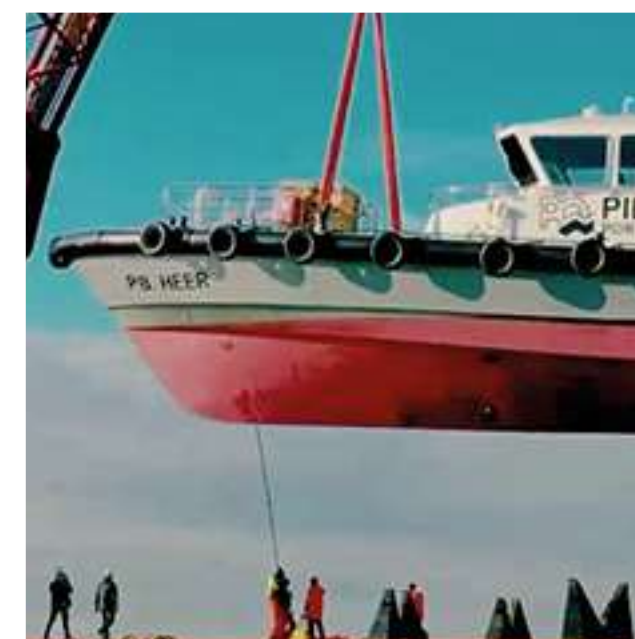
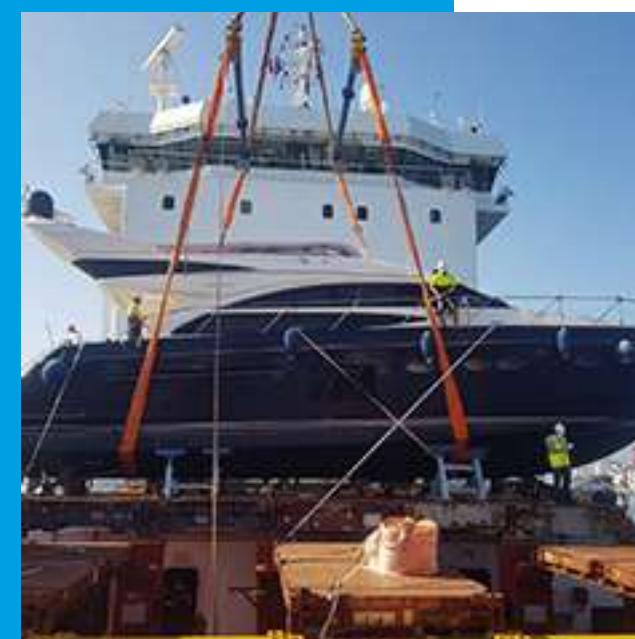
**120+** Yachts and Boats transported annually

## Industries served;

- Yachts/Boats through brokers and/or shipyards
- Defence Industry / Navy
- Work Boats
- Ferries

## Services provided;

- Interational Transportation (Sea and Land)
- Domestic Transportation
- Customs Clearance
- Warehousing
- Cradling
- Skipper





# Transit Routes Served







# What is myBATI ?

Customer Relationship Management System

Designed for Logistics and Transportation

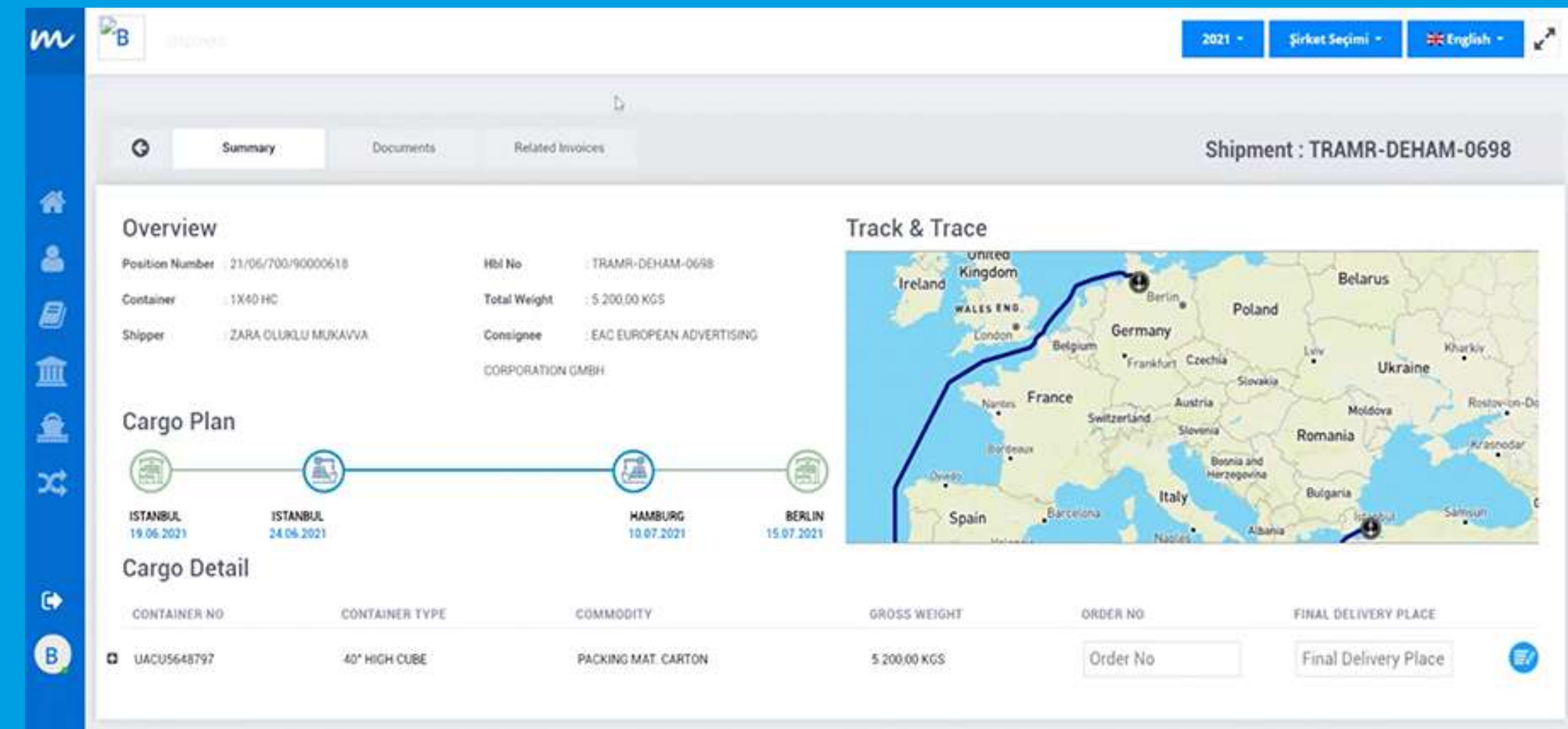
Real-Time Container Tracking with GPS location

Account Statements

Cargo Statistics

Invoices

And more...







[www.batigroup.com.tr](http://www.batigroup.com.tr)



Beyond Waves and Clouds | "a member of BATI GROUP"

[www.batilogistics.it](http://www.batilogistics.it)



Beyond Waves and Clouds | "a member of BATI GROUP"

[www.batilogistics.de](http://www.batilogistics.de)



Beyond Waves and Clouds | "a member of BATI GROUP"

[www.batilogisticsinc.com](http://www.batilogisticsinc.com)

